

Digital Portable X-ray System For Veterinary

Main Component	Tech Spe.	
Generator	Voltage	AC220V \pm 22V
	Power	5kW
	kV Range	40~110kV
	mA Range	20~100mA
	mAs Range	0.2-200mAs
	Working Frequency	\geq 40kHz
	Exposure time	0.01S~4S
X-ray tube	Anode heat storage	56KHU
	Focus	1.8mm
	Inherent filtration	1mm Al/75Kv
	Light source	LED
Touch Screen	Dimension	10.4inch
Physical Spe.		
Main Unit	Weight	19 kg
	Dimension	290×265×230 mm

China Care Medical Equipment Co.,Ltd

Adress: Room C208, Changsheng Business Building, Dagan South Road No 26 ,Tianhe,Guangzhou, China.

Cellphone/Whatsapp: 008613926480041 Skype: chinacaremed Wechat: Joseph20130708

Facebook/Youtube/Instragram/LinkedIn: china care medical

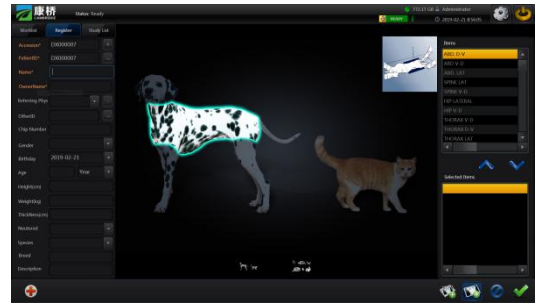
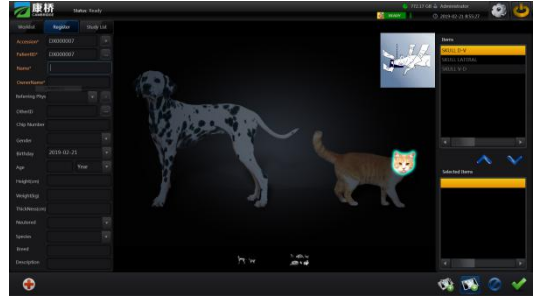
Website: www.chinacaremedical.com Email: info@chinacaremedical.com



- Profession Veterinary Acquisition Software
 - Support different brand of X-ray generators
 - Support Multi- languages
 - Support RIS/PACS/DICOM Printer Connection
 - Support professional tools



- Professional and efficient DR workstation
 - Patient management
 - Image capture
 - Image post-processing
 - Print and storage



- It can be widely used for equine/large animal, Companion, exotic and mixed animal practices, easy to use, ultra-durable, and create digital images of superior quality.

- .Deft and concise

- .6 periods of digital LED display

- .Failure self-protection, self-diagnosis

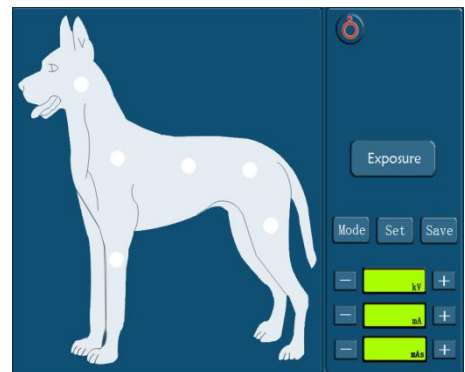
- . High precision control of tube voltage, tube current

- .48 kinds of presupposed anatomy memory pattern choice

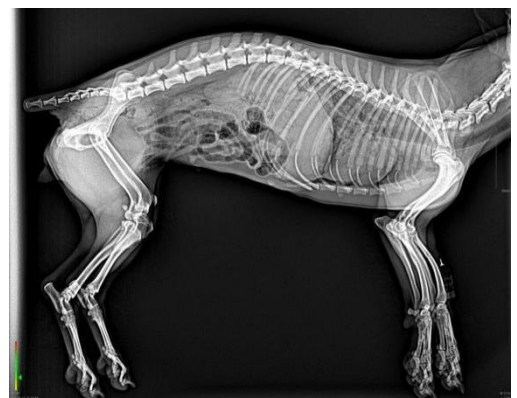
- . Accuracy control method of simulation and double digital loops

- . X-ray tube complete surrender by lead for protect X-ray leaking

- Exposure by hand switch
- Exposure by remote control
- Exposure by touch screen



10.4 inch touch screen



Imaging Gallery

